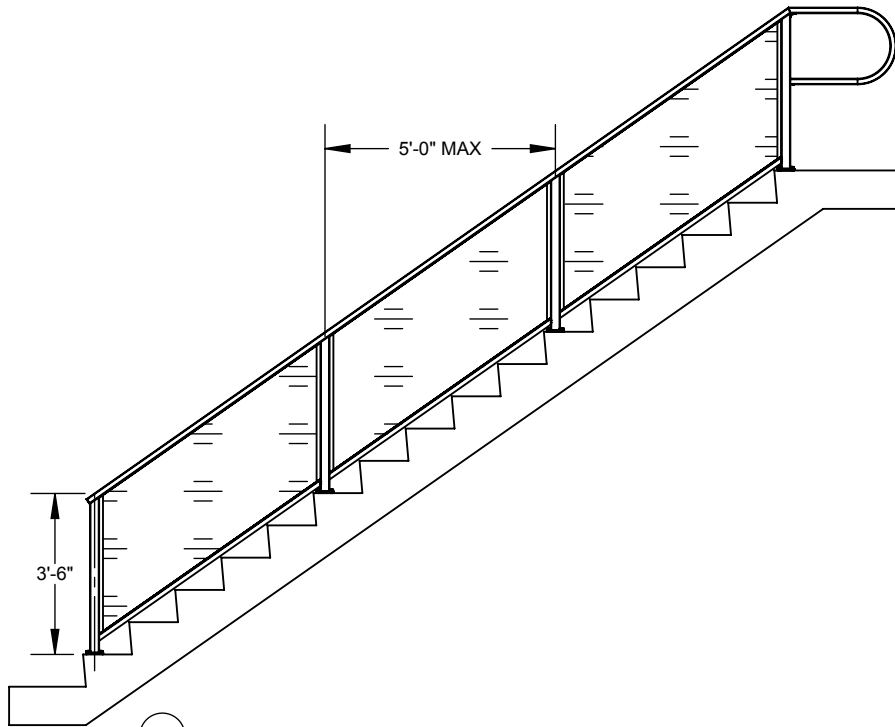


2

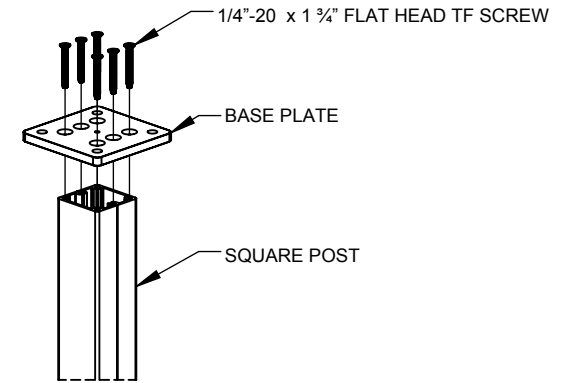
1

B

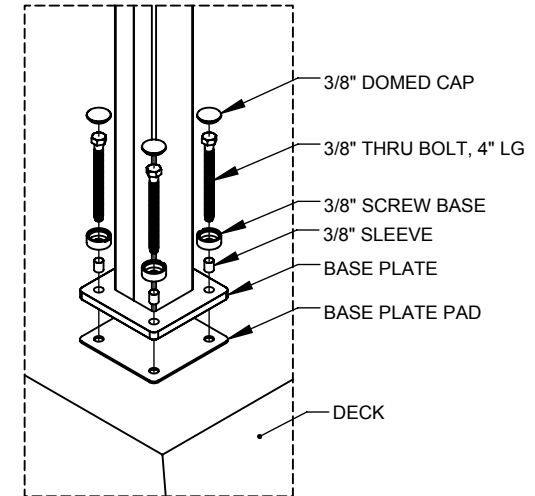
B



1 GLASS WITH TOP & BOTTOM RAIL, DECK MOUNT, STAIR GUARD



2 TYP. BASE PLATE TO POST
SCALE 1 : 8



3 TYP. DECK MOUNTING CONNECTION
SCALE 1 : 8

A

A

NOTES: UNLESS OTHERWISE SPECIFIED

1. DIMENSIONS SHOWN - INCHES [MM].
2. MACHINED SURFACES TO BE 63uIN MAX.
3. PART TO BE FREE OF BURRS AND SHARP EDGES.
4. ALL MATERIAL TO BE CLEAN, DEGREASED AND FREE OF ALL IMPURITIES.
5. ANY CHANGE MUST BE AUTHORIZED BY AN EGLASS ENGINEER.

DIMENSIONS ARE IN INCHES
 FRACTIONAL ±
 ANGULAR: MACH ±
 TWO PLACE DECIMAL ±
 THREE PLACE DECIMAL ±

MATERIAL

FINISH

DO NOT SCALE DRAWING

| | | |
|-----------|------|----------|
| | NAME | DATE |
| DRAWN | V.P. | 09/25/18 |
| ENG APPR. | | |
| MFG APPR. | | |

COMMENTS:
 PURCHASER HAS THE FULL RESPONSIBILITY TO COMPLY WITH LOCAL, NATIONAL AND INTERNATIONAL BUILDING CODES. PURCHASER SHALL COMPLY IN ALL RESPECTS WITH ALL APPLICABLE LEGAL REQUIREMENTS GOVERNING THE DUTIES, OBLIGATIONS, AND BUSINESS PRACTICES OF THEIR LOCALITIES AND SHALL OBTAIN ANY PERMITS OR LICENSES NECESSARY FOR THEIR OPERATIONS.



TITLE:
EGLASS SOLID, DECK MOUNT, STAIR GUARD, 42" RAILING SYSTEM

| | | |
|-------------|-------------------|--------------|
| SIZE | DWG. NO. | REV |
| A | CSDS-00-00 | 1 |
| SCALE: 1:50 | WEIGHT: | SHEET 1 OF 3 |

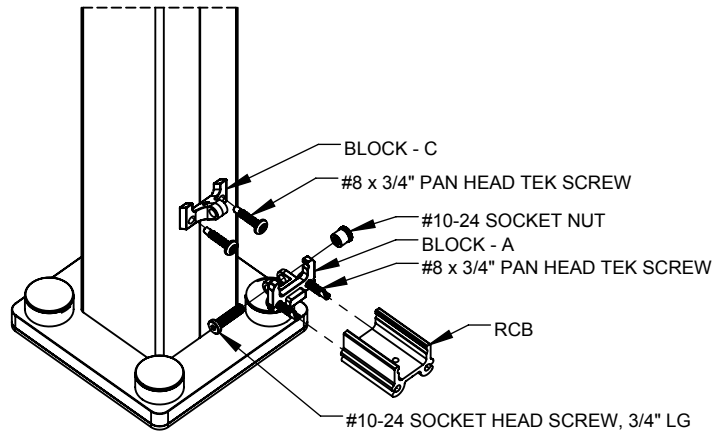
eGlass Solid™

PROPRIETARY AND CONFIDENTIAL

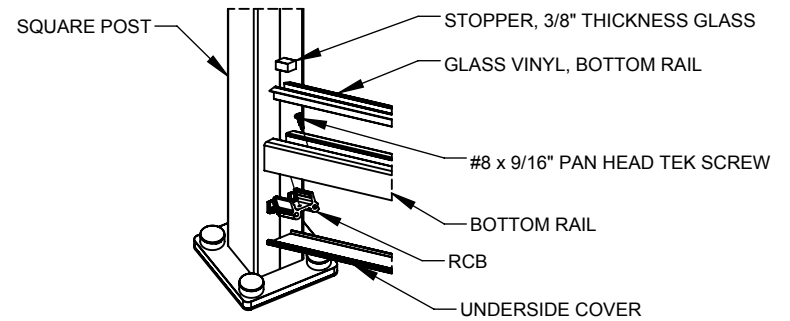
THE INFORMATION CONTAINED IN THIS DRAWING IS THE SOLE PROPERTY OF EGLASS LLC. ANY REPRODUCTION IN PART OR AS A WHOLE WITHOUT THE WRITTEN PERMISSION OF EGLASS LLC IS PROHIBITED.

2

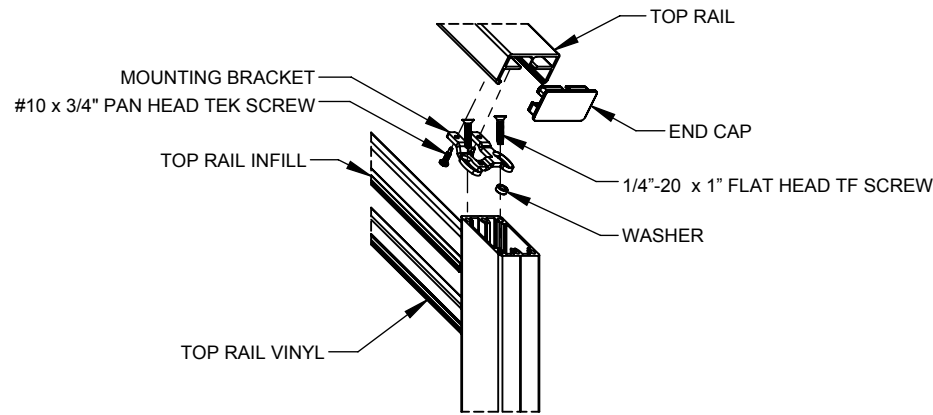
1



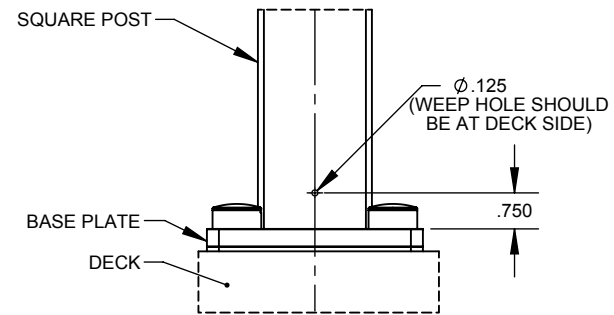
4 TYP. BOTTOM RAIL HINGE CONNECTION



5 TYP. BOTTOM RAIL CONNECTION
SCALE 1 : 8



6 TYP. TOP RAIL CONNECTION
SCALE 1 : 8



7 TYP. WEEP HOLE

NOTES: UNLESS OTHERWISE SPECIFIED

| | |
|---|--|
| <p>1. DIMENSIONS SHOWN - INCHES [MM]. 2. MACHINED SURFACES TO BE 63µIN MAX. 3. PART TO BE FREE OF BURRS AND SHARP EDGES. 4. ALL MATERIAL TO BE CLEAN, DEGREASED AND FREE OF ALL IMPURITIES. 5. ANY CHANGE MUST BE AUTHORIZED BY AN EGLASS ENGINEER.</p> | <p>DIMENSIONS ARE IN INCHES FRACTIONAL ± ANGULAR: MACH ± TWO PLACE DECIMAL ± THREE PLACE DECIMAL ±</p> |
| | <p>MATERIAL</p> |
| | <p>FINISH</p> |
| | <p>DO NOT SCALE DRAWING</p> |

| | |
|--|----------|
| NAME | DATE |
| V.P. | 09/25/18 |
| DRAWN | |
| ENG APPR. | |
| MFG APPR. | |
| <p>COMMENTS: PURCHASER HAS THE FULL RESPONSIBILITY TO COMPLY WITH LOCAL, NATIONAL AND INTERNATIONAL BUILDING CODES. PURCHASER SHALL COMPLY IN ALL RESPECTS WITH ALL APPLICABLE LEGAL REQUIREMENTS GOVERNING THE DUTIES, OBLIGATIONS, AND BUSINESS PRACTICES OF THEIR LOCALITIES AND SHALL OBTAIN ANY PERMITS OR LICENSES NECESSARY FOR THEIR OPERATIONS.</p> | |



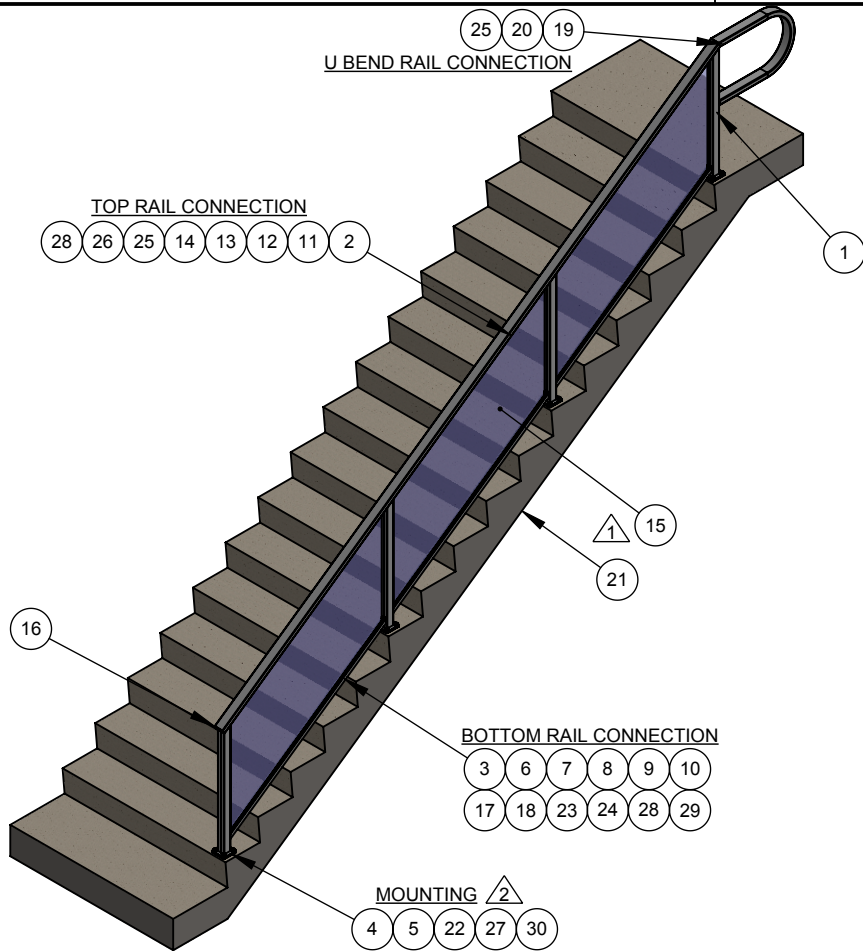
TITLE:
EGLASS SOLID, DECK MOUNT, STAIR GUARD, 42" RAILING SYSTEM

| | | |
|------------|-------------------|--------------|
| SIZE | DWG. NO. | REV |
| A | CSDS-00-00 | 1 |
| SCALE: 1:4 | WEIGHT: | SHEET 2 OF 3 |

eGlass Solid™

PROPRIETARY AND CONFIDENTIAL

THE INFORMATION CONTAINED IN THIS DRAWING IS THE SOLE PROPERTY OF EGLASS LLC. ANY REPRODUCTION IN PART OR AS A WHOLE WITHOUT THE WRITTEN PERMISSION OF EGLASS LLC IS PROHIBITED.



NOTES:

- 1. DIFFERENT SIZES OF GLASS PANELS ARE AVAILABLE.
REFER DWG NO: CAAS-G2-08 (1/4" THK) AND CAAS-G3-08 (3/8" THK).

MOUNTING:

FOR CONCRETE:

- 1. STD-AC-01 (3/8" THRU BOLT, 4" LENGTH)

FOR WOOD:

- 1. STD-AC-03 (3/8" LAG SCREW W/MIN 6" EMBED)

BILL OF MATERIAL TABLE

| ITEM NO. | PART NUMBER | DESCRIPTION | QTY. |
|----------|-------------|---|----------|
| 1 | AAAA-SP-48 | SQUARE POST, MEDIUM BLANK, (2 3/8" x 2 3/8" x 1/8" x 48") | AS REQD. |
| 2 | 810S-TR-01 | 810 SERIES, TOP RAIL (3" x 1 1/2" x 1/8"), 20' LENGTH | AS REQD. |
| 3 | AAAA-BR-01 | BOTTOM RAIL (1 3/8" x 1 1/2" x 1/8"), 20' LENGTH | AS REQD. |
| 4 | RADA-BP-01 | BASE PLATE, 36" HEIGHT SQUARE POST | AS REQD. |
| 5 | RADA-PD-01 | BASE PLATE PAD, SQUARE POST | AS REQD. |
| 6 | AAAS-HJ-02 | BLOCK - A | AS REQD. |
| 7 | AAAS-HJ-01 | BLOCK - B | AS REQD. |
| 8 | AAAS-HJ-03 | BLOCK - C | AS REQD. |
| 9 | AAAA-RC-01 | RCB, 1.5" PRE-CUT | AS REQD. |
| 10 | AAAA-BV-31 | GLASS VINYL, BOTTOM RAIL, 3/8" THICK GLASS | AS REQD. |
| 11 | ASAA-MB-01 | EGLASS SOLID, MOUNTING BRACKET | AS REQD. |
| 12 | ASAA-WS-01 | WASHER | AS REQD. |
| 13 | ASAA-TI-01 | EGLASS SOLID, INFILL, TOP RAIL, 20' LENGTH | AS REQD. |
| 14 | AAAA-TV-31 | GLASS VINYL, TOP RAIL, 3/8" THICK GLASS | AS REQD. |
| 15 | CAAS-G3-08 | 3/8" TEMPERED GLASS, STAIR GUARD RAILING | AS REQD. |
| 16 | ASAA-EC-01 | EGLASS SOLID, END CAP, TOP RAIL | AS REQD. |
| 17 | AAAA-UC-01 | BOTTOM RAIL, UNDERSIDE COVER, 20' LENGTH | AS REQD. |
| 18 | AAAA-ST-31 | STOPPER, 3/8" THICKNESS GLASS | AS REQD. |
| 19 | AAAS-LB-01 | L-BRACKET | AS REQD. |
| 20 | AAAS-UB-01 | U-BEND RAIL, 3" TOP RAIL | AS REQD. |
| 21 | STD-DK-03 | STEPS - CONCRETE | AS REQD. |
| 22 | STD-AC-01 | 3/8" THRU BOLT, 4" LG | AS REQD. |
| 23 | STD-NT-03 | #10-24 SOCKET NUT | AS REQD. |
| 24 | STD-SC-02 | #8 x 9/16" PAN HEAD TEK SCREW | AS REQD. |
| 25 | STD-SC-03 | #10 x 3/4" PAN HEAD TEK SCREW | AS REQD. |
| 26 | STD-SC-04 | 1/4"-20 x 1" FLAT HEAD TF SCREW | AS REQD. |
| 27 | STD-SC-05 | 1/4"-20 x 1 3/4" FLAT HEAD TF SCREW | AS REQD. |
| 28 | STD-SC-12 | #8 x 3/4" PAN HEAD TEK SCREW | AS REQD. |
| 29 | STD-SC-13 | #10-24 SOCKET HEAD SCREW, 3/4" LG | AS REQD. |
| 30 | STD-SW-00 | 3/8" SCREW COVER | AS REQD. |

NOTES: UNLESS OTHERWISE SPECIFIED

| | | | |
|--|---|--|--|
| <p>eGlass Solid™</p> <p>PROPRIETARY AND CONFIDENTIAL</p> <p>THE INFORMATION CONTAINED IN THIS DRAWING IS THE SOLE PROPERTY OF EGLASS LLC. ANY REPRODUCTION IN PART OR AS A WHOLE WITHOUT THE WRITTEN PERMISSION OF EGLASS LLC IS PROHIBITED.</p> | <p>1. DIMENSIONS SHOWN - INCHES [MM].</p> <p>2. MACHINED SURFACES TO BE 63uIN MAX.</p> <p>3. PART TO BE FREE OF BURRS AND SHARP EDGES.</p> <p>4. ALL MATERIAL TO BE CLEAN, DEGREASED AND FREE OF ALL IMPURITIES.</p> <p>5. ANY CHANGE MUST BE AUTHORIZED BY AN EGLASS ENGINEER.</p> | <p>DIMENSIONS ARE IN INCHES</p> <p>FRACTIONAL ±</p> <p>ANGULAR: MACH ±</p> <p>TWO PLACE DECIMAL ±</p> <p>THREE PLACE DECIMAL ±</p> | <p>NAME</p> <p>DATE</p> <p>DRAWN</p> <p>ENG APPR.</p> <p>MFG APPR.</p> <p>COMMENTS:</p> <p>PURCHASER HAS THE FULL RESPONSIBILITY TO COMPLY WITH LOCAL, NATIONAL AND INTERNATIONAL BUILDING CODES. PURCHASER SHALL COMPLY IN ALL RESPECTS WITH ALL APPLICABLE LEGAL REQUIREMENTS GOVERNING THE DUTIES, OBLIGATIONS, AND BUSINESS PRACTICES OF THEIR LOCALITIES AND SHALL OBTAIN ANY PERMITS OR LICENSES NECESSARY FOR THEIR OPERATIONS.</p> |
| | MATERIAL | | |
| | FINISH | | |
| | DO NOT SCALE DRAWING | | |

NAME: V.P.
DATE: 09/25/18



TITLE:
EGLASS SOLID, DECK MOUNT, STAIR GUARD, 42" RAILING SYSTEM

| | | |
|-------------|-------------------|--------------|
| SIZE | DWG. NO. | REV |
| A | CSDS-00-00 | 1 |
| SCALE: 1:50 | WEIGHT: | SHEET 3 OF 3 |