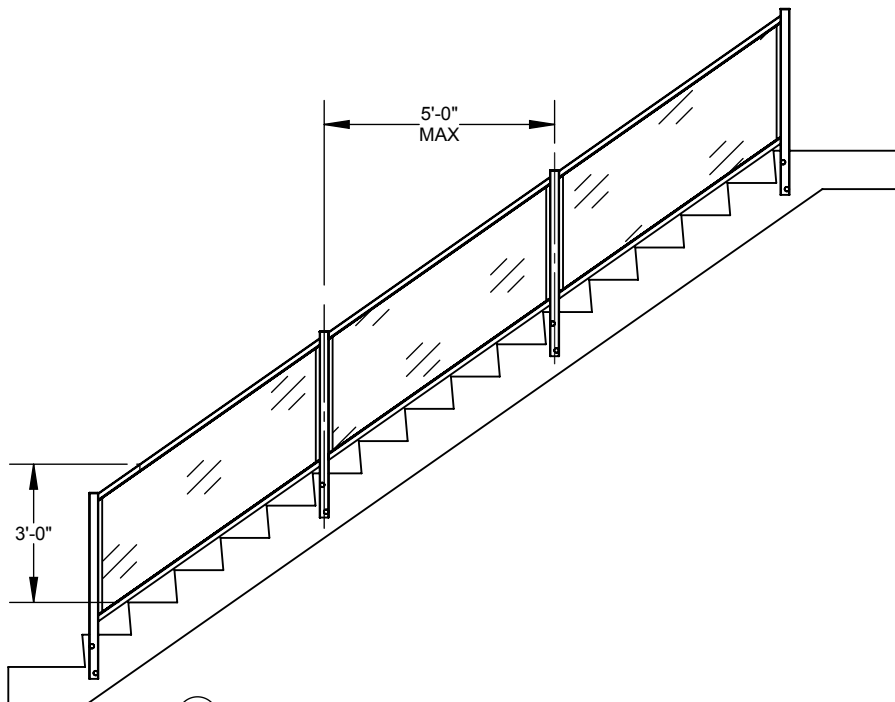


2

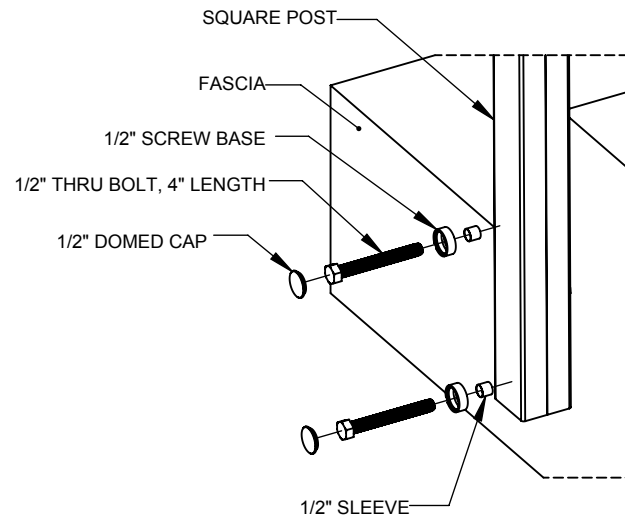
1

B

B



① GLASS WITH TOP AND BOTTOM RAIL, STAIR GAURD



② TYP. FASCIA MOUNTING CONNECTION
SCALE 1 : 8

A

A

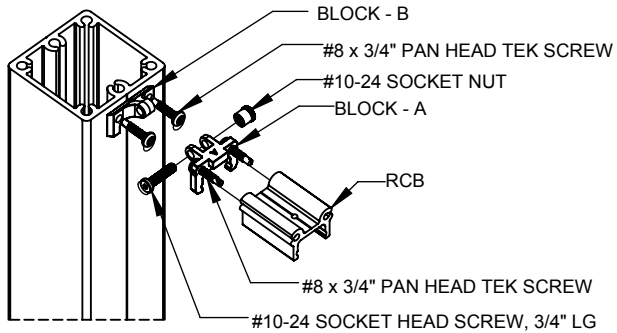
<p>eGlass Element™</p> <p>PROPRIETARY AND CONFIDENTIAL</p> <p>THE INFORMATION CONTAINED IN THIS DRAWING IS THE SOLE PROPERTY OF EGLASS LLC. ANY REPRODUCTION IN PART OR AS A WHOLE WITHOUT THE WRITTEN PERMISSION OF EGLASS LLC IS PROHIBITED.</p>	<p>NOTES: UNLESS OTHERWISE SPECIFIED</p>		<p>NAME</p> <p>V.P.</p>	<p>DATE</p> <p>12/06/18</p>	<p>eGLASS RAILING™</p> <p>TITLE: EGLASS ELEMENT, FASCIA MOUNT, NO BRACKET, STAIR GUARD, 36" RAILING SYSTEM</p>		
	<p>1. DIMENSIONS SHOWN - INCHES [MM].</p> <p>2. MACHINED SURFACES TO BE 63uIN MAX.</p> <p>3. PART TO BE FREE OF BURRS AND SHARP EDGES.</p> <p>4. ALL MATERIAL TO BE CLEAN, DEGREASED AND FREE OF ALL IMPURITIES.</p> <p>5. ANY CHANGE MUST BE AUTHORIZED BY AN EGLASS ENGINEER.</p>	<p>DIMENSIONS ARE IN INCHES</p> <p>FRACTIONAL ±</p> <p>ANGULAR: MACH ±</p> <p>TWO PLACE DECIMAL ±</p> <p>THREE PLACE DECIMAL ±</p>	<p>DRAWN</p>	<p>ENG APPR.</p>		<p>SIZE</p> <p>A</p>	<p>DWG. NO.</p> <p>REFS-00-00</p>
	<p>MATERIAL</p>	<p>FINISH</p>	<p>COMMENTS:</p> <p>PURCHASER HAS THE FULL RESPONSIBILITY TO COMPLY WITH LOCAL, NATIONAL AND INTERNATIONAL BUILDING CODES. PURCHASER SHALL COMPLY IN ALL RESPECTS WITH ALL APPLICABLE LEGAL REQUIREMENTS GOVERNING THE DUTIES, OBLIGATIONS, AND BUSINESS PRACTICES OF THEIR LOCALITIES AND SHALL OBTAIN ANY PERMITS OR LICENSES NECESSARY FOR THEIR OPERATIONS.</p>		<p>SCALE: 1:50</p>	<p>WEIGHT:</p>	<p>SHEET 1 OF 3</p>
	<p>DO NOT SCALE DRAWING</p>						

2

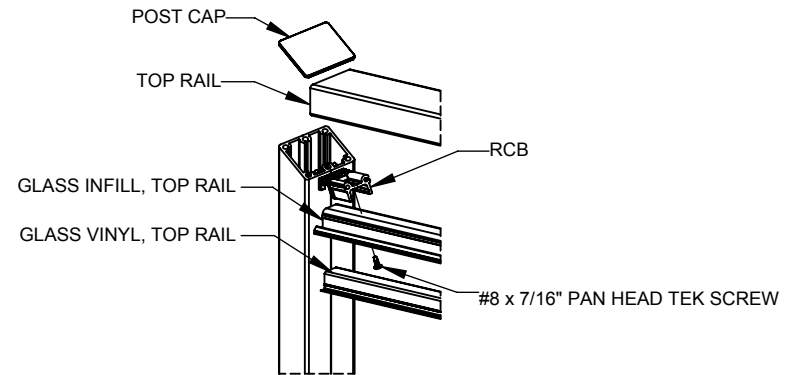
1

2

1

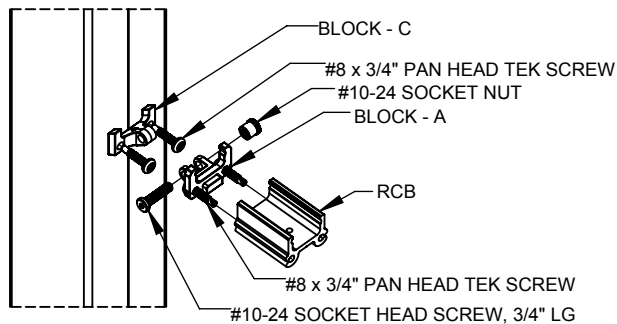


3 TYP. TOP RAIL HINGE JOINT CONNECTION

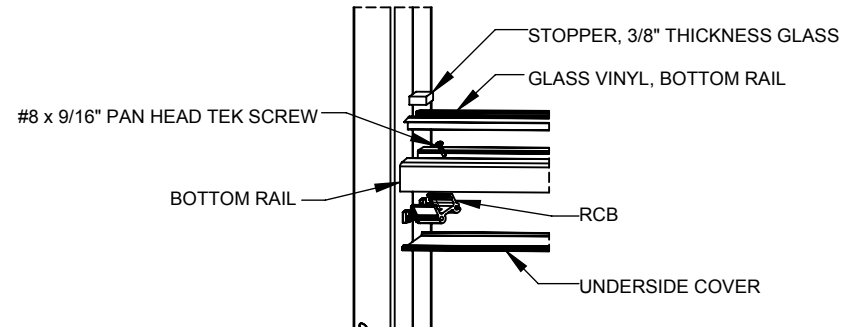


4 TYP. TOP RAIL CONNECTION

SCALE 1 : 8



5 TYP. BOTTOM RAIL HINGE JOINT CONNECTION



6 TYP. BOTTOM RAIL CONNECTION

SCALE 1 : 8

NOTES: UNLESS OTHERWISE SPECIFIED

1. DIMENSIONS SHOWN - INCHES [MM]. 2. MACHINED SURFACES TO BE 63UIN MAX. 3. PART TO BE FREE OF BURRS AND SHARP EDGES. 4. ALL MATERIAL TO BE CLEAN, DEGREASED AND FREE OF ALL IMPURITIES. 5. ANY CHANGE MUST BE AUTHORIZED BY AN EGLASS ENGINEER.	DIMENSIONS ARE IN INCHES FRACTIONAL ± ANGULAR: MACH ± TWO PLACE DECIMAL ± THREE PLACE DECIMAL ±
	MATERIAL
	FINISH
	DO NOT SCALE DRAWING

NAME	DATE
V.P.	12/06/18
DRAWN	
ENG APPR.	
MFG APPR.	
COMMENTS: PURCHASER HAS THE FULL RESPONSIBILITY TO COMPLY WITH LOCAL, NATIONAL AND INTERNATIONAL BUILDING CODES. PURCHASER SHALL COMPLY IN ALL RESPECTS WITH ALL APPLICABLE LEGAL REQUIREMENTS GOVERNING THE DUTIES, OBLIGATIONS, AND BUSINESS PRACTICES OF THEIR LOCALITIES AND SHALL OBTAIN ANY PERMITS OR LICENSES NECESSARY FOR THEIR OPERATIONS.	



TITLE: **EGLASS ELEMENT, FASCIA MOUNT, NO BRACKET, STAIR GUARD, 36" RAILING SYSTEM**

SIZE	DWG. NO.	REV
A	REFS-00-00	6
SCALE: 1:4	WEIGHT:	SHEET 2 OF 3

eGlass Element™

PROPRIETARY AND CONFIDENTIAL

THE INFORMATION CONTAINED IN THIS DRAWING IS THE SOLE PROPERTY OF EGLASS LLC. ANY REPRODUCTION IN PART OR AS A WHOLE WITHOUT THE WRITTEN PERMISSION OF EGLASS LLC IS PROHIBITED.

2

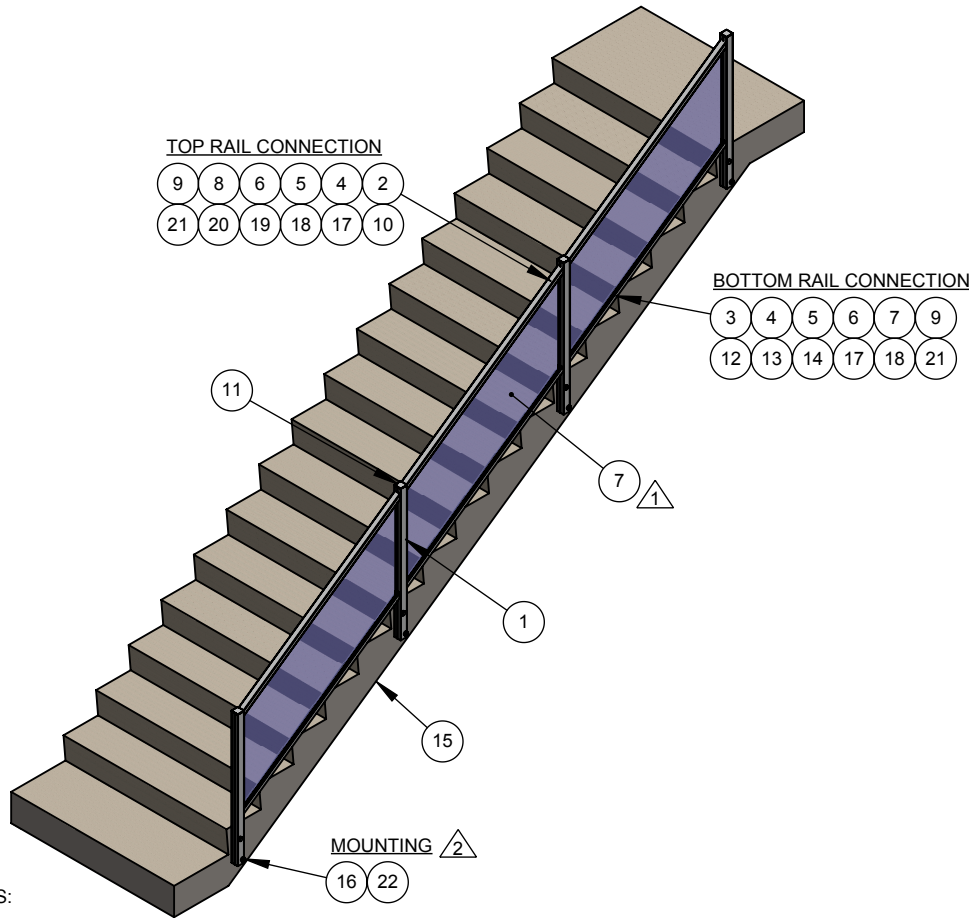
1

2

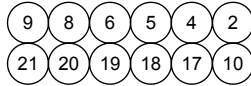
1

B

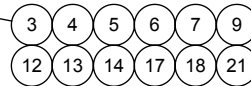
B



TOP RAIL CONNECTION



BOTTOM RAIL CONNECTION



MOUNTING



NOTES:

- DIFFERENT SIZES OF GLASS PANELS ARE AVAILABLE. REFER DWG NO: RAAS-G2-08 (1/4" THK) AND RAAS-G3-08 (3/8" THK).
- MOUNTING:

FOR CONCRETE:

- 1. STD-AC-02 (1/2" THRU BOLT, 4" LENGTH)

FOR WOOD:

- 1. STD-AC-04 (1/2" LAG SCREW 7" APART W/MIN 6" EMBED)

BILL OF MATERIAL TABLE			
ITEM NO.	PART NUMBER	DESCRIPTION	QTY.
1	AAFA-SP-56	SQUARE POST, LONG BLANK, (2 3/8" x 2 3/8" x 1/8" x 56")	AS REQD.
2	800S-TR-01	800 SERIES, TOP RAIL (2" x 1 1/2" x 1/8"), 20' LENGTH	AS REQD.
3	AAAA-BR-01	BOTTOM RAIL (1 3/8" x 1 1/2" x 1/8"), 20' LENGTH	AS REQD.
4	AAAA-RC-01	RCB, 1.5" PRE-CUT	AS REQD.
5	AAAS-HJ-03	BLOCK - C	AS REQD.
6	AAAS-HJ-02	BLOCK - A	AS REQD.
7	RAAS-G3-08	3/8" TEMPERED GLASS, STAIR GUARD RAILING	AS REQD.
8	AEEA-TI-01	EGLASS ELEMENT, INFILL, TOP RAIL, 20' LENGTH	AS REQD.
9	AAAS-HJ-01	BLOCK - B	AS REQD.
10	AAAA-TV-31	GLASS VINYL, TOP RAIL, 3/8" THICK GLASS, 5' LENGTH	AS REQD.
11	AAAA-PC-01	POST CAP, 2 3/8" SQUARE POST	AS REQD.
12	AAAA-BV-31	GLASS VINYL, BOTTOM RAIL, 3/8" THICK GLASS, 5' LENGTH	AS REQD.
13	AAAA-UC-01	BOTTOM RAIL, UNDERSIDE COVER, 20' LENGTH	AS REQD.
14	AAAA-ST-31	STOPPER, 3/8" THICKNESS GLASS	AS REQD.
15	STD-DK-03	STEPS - CONCRETE	AS REQD.
16	STD-AC-02	1/2" THRU BOLT, 4" LENGTH	AS REQD.
17	STD-NT-03	#10-24 SOCKET NUT	AS REQD.
18	STD-SC-02	#8 x 9/16" PAN HEAD TEK SCREW	AS REQD.
19	STD-SC-11	#8 x 7/16" PAN HEAD TEK SCREW	AS REQD.
20	STD-SC-12	#8 x 3/4" PAN HEAD TEK SCREW	AS REQD.
21	STD-SC-13	#10-24 SOCKET HEAD SCREW, 3/4" LG	AS REQD.
22	STD-SW-10	1/2" SCREW COVER	AS REQD.

A

A

eGlass Element™

PROPRIETARY AND CONFIDENTIAL

THE INFORMATION CONTAINED IN THIS DRAWING IS THE SOLE PROPERTY OF EGLASS LLC. ANY REPRODUCTION IN PART OR AS A WHOLE WITHOUT THE WRITTEN PERMISSION OF EGLASS LLC IS PROHIBITED.

NOTES: UNLESS OTHERWISE SPECIFIED

- 1. DIMENSIONS SHOWN - INCHES [MM].
- 2. MACHINED SURFACES TO BE 63µIN MAX.
- 3. PART TO BE FREE OF BURRS AND SHARP EDGES.
- 4. ALL MATERIAL TO BE CLEAN, DEGREASED AND FREE OF ALL IMPURITIES.
- 5. ANY CHANGE MUST BE AUTHORIZED BY AN EGLASS ENGINEER.

DIMENSIONS ARE IN INCHES
 FRACTIONAL ±
 ANGULAR: MACH ±
 TWO PLACE DECIMAL ±
 THREE PLACE DECIMAL ±

MATERIAL

FINISH

DO NOT SCALE DRAWING

NAME DATE
 V.P. 12/06/18

DRAWN
 ENG APPR.
 MFG APPR.

COMMENTS:
 PURCHASER HAS THE FULL RESPONSIBILITY TO COMPLY WITH LOCAL, NATIONAL AND INTERNATIONAL BUILDING CODES. PURCHASER SHALL COMPLY IN ALL RESPECTS WITH ALL APPLICABLE LEGAL REQUIREMENTS GOVERNING THE DUTIES, OBLIGATIONS, AND BUSINESS PRACTICES OF THEIR LOCALITIES AND SHALL OBTAIN ANY PERMITS OR LICENSES NECESSARY FOR THEIR OPERATIONS.



TITLE: **EGLASS ELEMENT, FASCIA MOUNT, NO BRACKET, STAIR GUARD, 36" RAILING SYSTEM**

SIZE DWG. NO. REV
A **REFS-00-00** **6**

SCALE: 1:50 WEIGHT: SHEET 3 OF 3

2

1