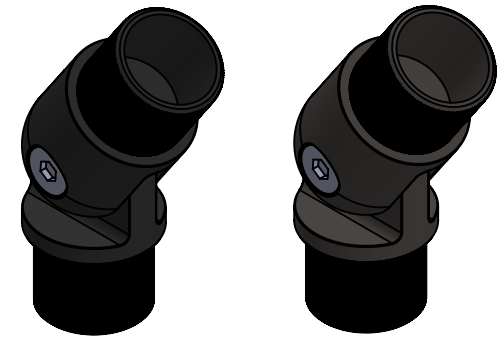


2

1

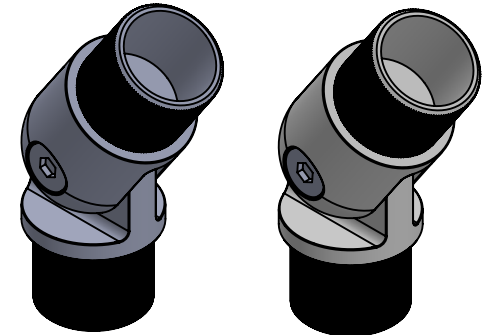
BILL OF MATERIAL TABLE

ITEM NO.	PART NUMBER	DESCRIPTION	BLACK/QTY.
1	HDRL-EJ-11	BASE - STAINLESS 1.50" ADJUSTABLE ELBOW	1
2	HDRL-EJ-12	SLEEVE - STAINLESS 1.50" ADJUSTABLE ELBOW	1
3	HDRL-BS-11	3/8 x 1/2 LG. FEMALE BARREL FOR LINK ELBOW	1
4	HDRL-BS-12	3/8 x 1/2 LG. MALE BARREL FOR LINK ELBOW	1



BLACK

BRONZE

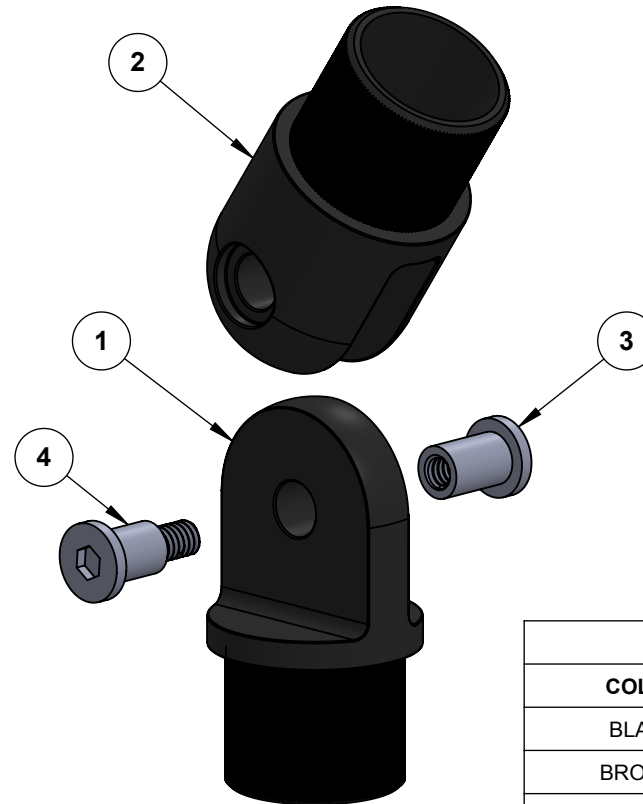
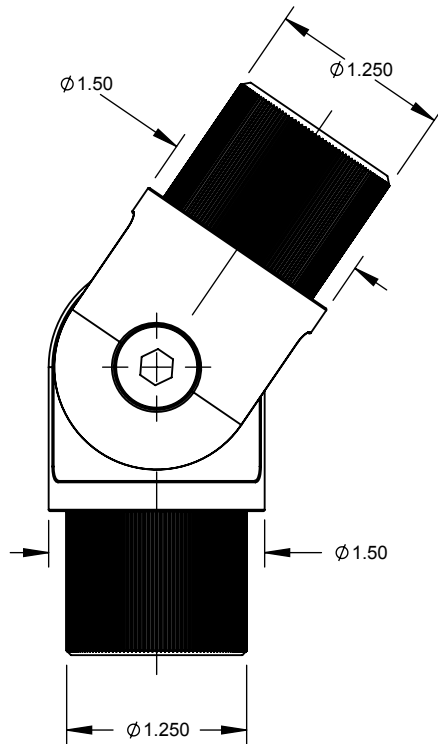


NATURAL

WHITE

B

B



UPC PARTS LIST		
COLOR	UPC NUMBER	PART NUMBER
BLACK		HDRL-EJ-00-BL
BRONZE		HDRL-EJ-00-BZ
NATURAL		HDRL-EJ-00-NT
WHITE		HDRL-EJ-00-WT

A

A

NOTES: UNLESS OTHERWISE SPECIFIED		NAME	DATE		
1. DIMENSIONS SHOWN - INCHES [MM]. 2. MACHINED SURFACES TO BE 63µIN MAX. 3. PART TO BE FREE OF BURRS AND SHARP EDGES. 4. ALL MATERIAL TO BE CLEAN, DEGREASED AND FREE OF ALL IMPURITIES. 5. ANY CHANGE MUST BE AUTHORIZED BY AN EGLASS ENGINEER.	DIMENSIONS ARE IN INCHES FRACTIONAL ±	DRAWN	V.P.		TITLE: ADJUSTABLE ELBOW JOINT FOR 1.5" ROUND STAINLESS STEEL RAILING SYSTEM
	ANGULAR: MACH ±	ENG APPR.			
	TWO PLACE DECIMAL ±	MFG APPR.		SIZE A	DWG. NO. HDRL-EJ-00
	THREE PLACE DECIMAL ±	COMMENTS: PURCHASER HAS THE FULL RESPONSIBILITY TO COMPLY WITH LOCAL, NATIONAL AND INTERNATIONAL BUILDING CODES. PURCHASER SHALL COMPLY IN ALL RESPECTS WITH ALL APPLICABLE LEGAL REQUIREMENTS GOVERNING THE DUTIES, OBLIGATIONS, AND BUSINESS PRACTICES OF THEIR LOCALITIES AND SHALL OBTAIN ANY PERMITS OR LICENSES NECESSARY FOR THEIR OPERATIONS.		REV 1	
	MATERIAL	DO NOT SCALE DRAWING		SCALE: 3:4	WEIGHT:
FINISH			SHEET 1 OF 1		

PROPRIETARY AND CONFIDENTIAL

THE INFORMATION CONTAINED IN THIS DRAWING IS THE SOLE PROPERTY OF EGLASS LLC. ANY REPRODUCTION IN PART OR AS A WHOLE WITHOUT THE WRITTEN PERMISSION OF EGLASS LLC IS PROHIBITED.

2

1