



CUSTOMER SERVICE CONTACT INFO

Phone/Fax: 800-545-1275

Email: sales@eglassrailing.com

Website: https://www.eglassrailing.com

Address: 4055 S Grant St.
Washougal, WA 98671

Installation Instructions For eGlass® Link™

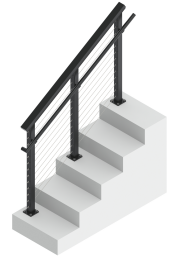
Assembly & Installation Steps:

1. Installation Preparation (p.1-2)
2. Review Layout (p.3)
3. Link Rail Installation (p.3-5)

eGlass® Link™ Rail Options



Wall Handrail



Stair Rail

Purchaser has the full responsibility to comply with local, national, and international building codes. Purchaser shall comply in all respects with all applicable legal requirements governing the duties, obligations, and business practices of their localities and shall obtain any permits or licenses necessary for their operations. In no event shall eGlass LLC be liable for any direct, indirect, punitive, incidental, special, or consequential damages, to property or life, whatsoever arising out of or connected with the use or mis-use of our products. Purchaser shall not take any action in violation of any applicable legal requirement that could result in liability being imposed on eGlass LLC. Any liability imposed by eGlass LLC shall be limited to the amount of insurance carried by eGlass LLC that may be applicable to such claims as may arise.

eGlass railing system components meet all building guidelines for structural strength and usability and can easily be assembled on-site. The railing system components are made of aluminum, providing a long-term low maintenance system.

It is the responsibility of the installer to meet and/or exceed all code and safety requirements and to obtain all required building permits. The deck and railing installer should determine and implement appropriate installation techniques for each installation.

Refer to www.eglassrailing.com to ensure that you are viewing the most recent installation instructions.

Step 1: Installation Preparation

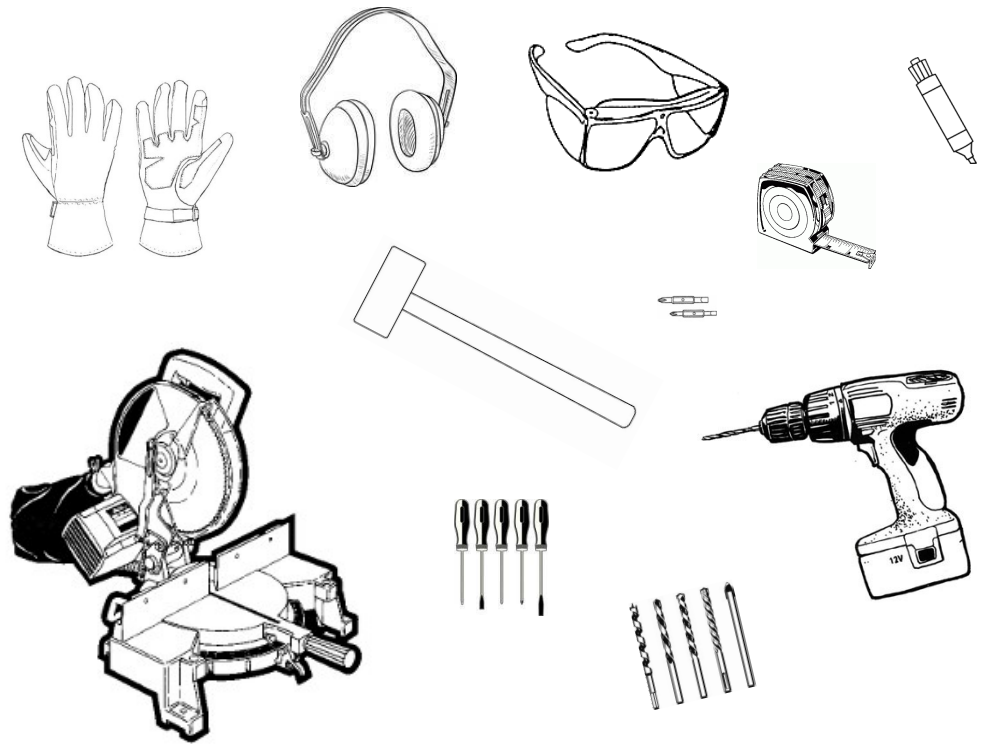
- Match all components to the packing slip and inspect to ensure none are missing or damaged.
- Gather recommended tools and supplies.
- Measure twice before cutting any component.



Installation Instructions For eGlass® Link™

Tools Needed

- Safety glasses
- Ear protection
- Gloves
- Measuring tape
- Felt tip marker
- Chop saw
- Center punch
- Electric drill
- Drive bits
- Drill bits
- Dead blow hammer



Link Railing Parts

<p>①</p>  <p>Link Rail</p> <p>ITEM No. HDRL-LK-00</p> <p><i>Trim as needed</i></p>	<p>②</p>  <p>Link Rail Bracket</p> <p>ITEM No. HDRL-BR-01</p>	<p>③</p>  <p>Link Rail Elbow</p> <p>ITEM No. HDRL-LK-20</p>
<p>④</p>  <p>Link Rail End Cap</p> <p>ITEM No. HDRL-EC-10</p>	<p>⑤</p>  <p>Link Rail Wall Return</p> <p>ITEM No. HDRL-WR-20</p>	<p>⑥</p>  <p>Link Rail End Loop</p> <p>ITEM No. HDRL-LK-31</p>
<p>⑦</p>  <p>#12 x 2" Phillip Flat Head Screw (for walls/wood)</p> <p>ITEM No. 017952</p>	<p>⑧</p>  <p>12-24 x 1" Phillip Flat Head Screw (for into metal)</p> <p>ITEM No. 017914</p>	<p>⑨</p>  <p>Link Rail Adjustable Elbow</p> <p>ITEM No. HDRL-EJ-00</p>

Installation Instructions For eGlass® Link™

Step 2: Review Layout

Review your eGlass Installation Layout Detail to verify where your Link Railing will start and stop (ie; Sections).

Step 3: Link Stair & Handrail

The Link Rail can be used in the following ways:

- A. Link Wall Handrail
- B. Link Stair Rail

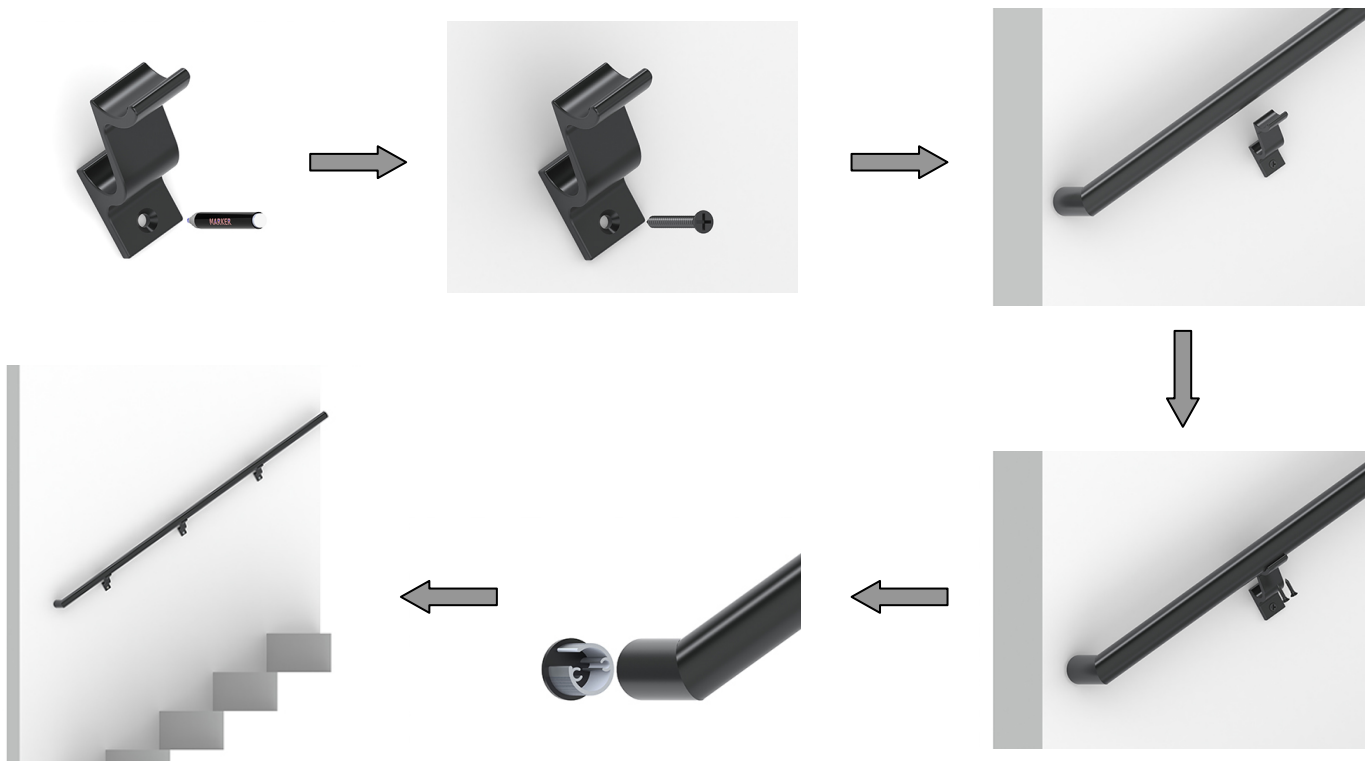
3A. Link Wall Handrail

This handrail assembly attaches directly to walls to create a graspable handrail. Wall returns meet IBC. Install splices and wall returns using epoxy.

Each handrail Assembly includes:

- 1ea Link Rail Tube (length varies; longer options include splices)
- 2ea Link Handrail Wall Returns
- Link Handrail Brackets (quantity varies)
- Epoxy Kit & Necessary Screws

Fig 1: Link Wall Handrail Installation



Installation Instructions For eGlass® Link™

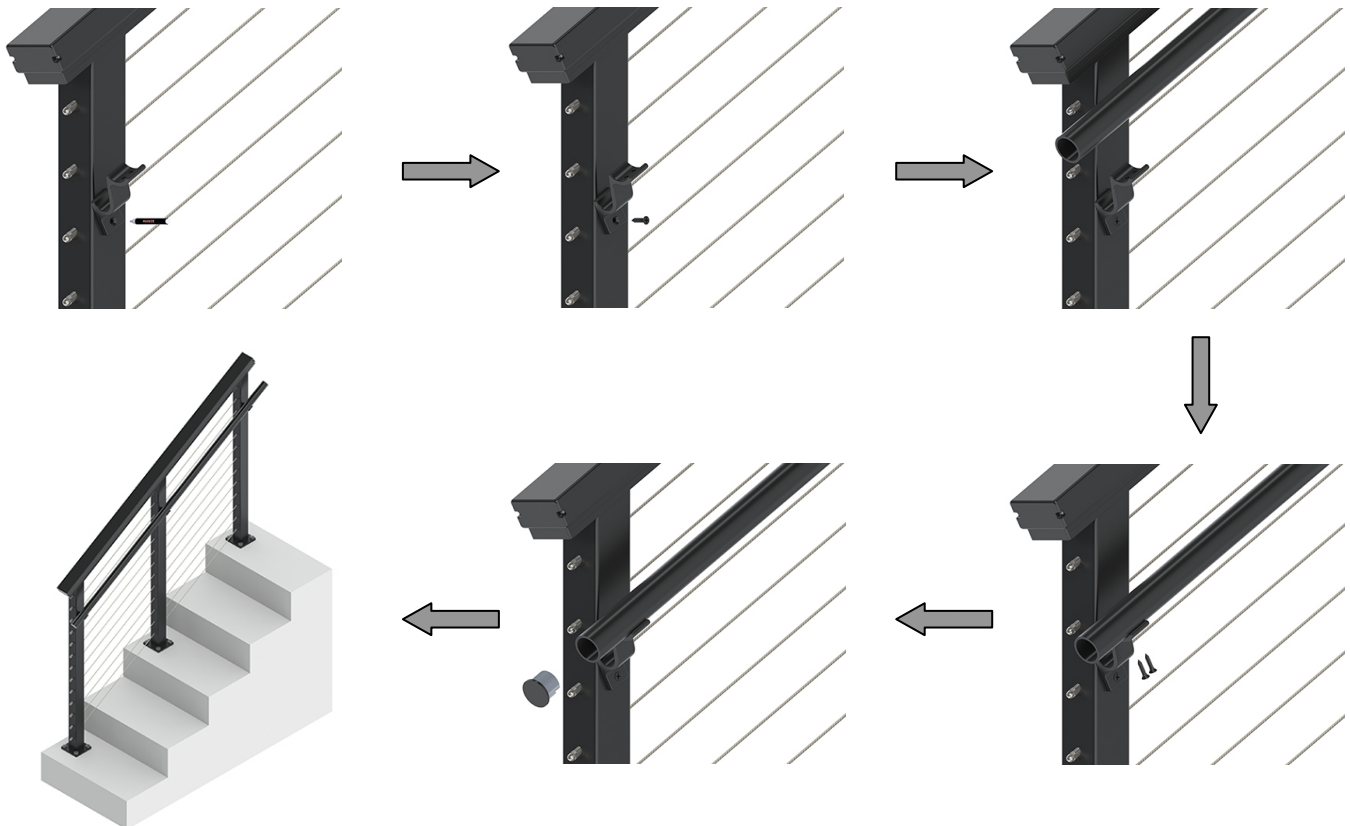
3B. Link Stair Rail

This handrail assembly attaches to the posts of a railing system to create a 36" high graspable handrail. Available end options: wall returns, end caps, and end loops. Install end options using epoxy.

Each handrail Assembly includes:

- 1ea Link Rail Tube (length varies; longer options include splices)
- 2ea Link Handrail Wall Returns, End Caps, OR End Loops w/ Custom Elbows
- Link Handrail Brackets (quantity varies)
- Epoxy Kit & Necessary Screws

Fig 2: Link Stair Rail Installation - End Cap Variation



Installation Instructions For eGlass® Link™

Fig 3: Link Stair Rail Installation - Wall Return Variation

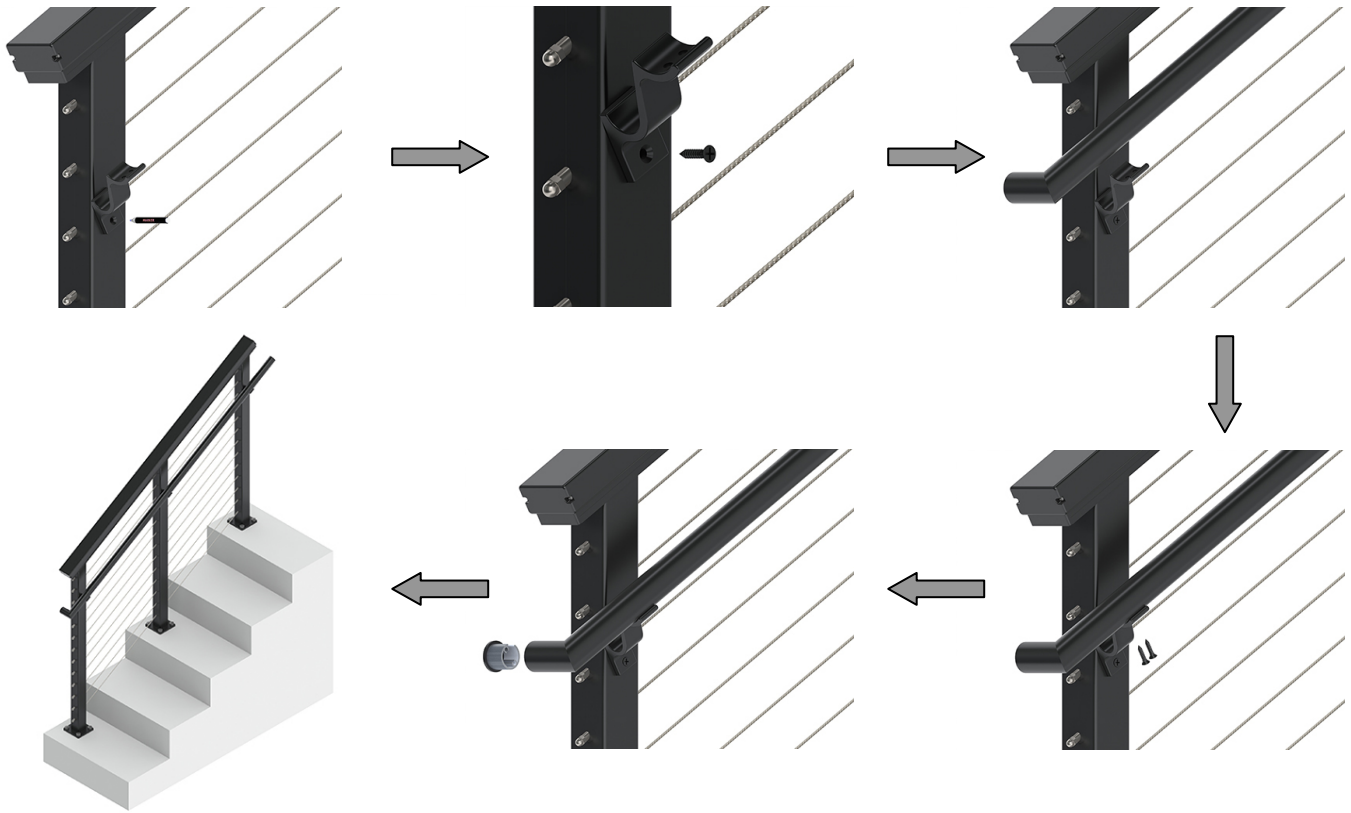


Fig 4: Link Stair Rail Installation - End Loop Variation

